

desaliQ inline control module

Intended use

The desaliQ inline control module is designed for mobile as well as temporary stationary use in heating circuits.

The desaliQ inline control module is intended for the treatment and filling of heating water during ongoing operation.

For the duration of the treatment, the desaliQ inline control module is integrated into the circuit in a bypass.

The desaliQ inline control module must **not** be used for the treatment of raw water that is to be used as drinking water.

Function

The function of the desaliQ inline control module is based on the well-proven processes of filtration and softening or demineralisation.

The desaliQ inline control module works with the following automatically monitored operating modes:

- Treatment
 - Filtration
 - Demineralisation
 - Softening
- Filling
 - Demineralisation
 - Softening

The desaliQ inline control module measures the conductivity (LF), the temperature and the flow rate.

The remaining capacity of the cartridge is calculated during softening.

Filtration

In combination with the desaliQ inline filter module, undissolved impurities such as rust and dirt particles are filtered from the heating water.

Demineralisation

In combination with the desaliQ resin bags, the heating water is fully demineralised.

Softening

In combination with the desaliQ softening cartridge, the heating water is softened according to the ion exchange principle.

Design

- Stainless steel console with carrying handle
- Pump section with circulation pump and combined block for temperature and conductivity measurement
- Sensor section with turbine water meter (TWZ) and conductivity meter
- Control electronics with key-operated control panel integrated in the console
- Mains cable, 3 m in length, with Schuko plug
- All components are optimised for use in heating water with a maximum temperature of 80 °C

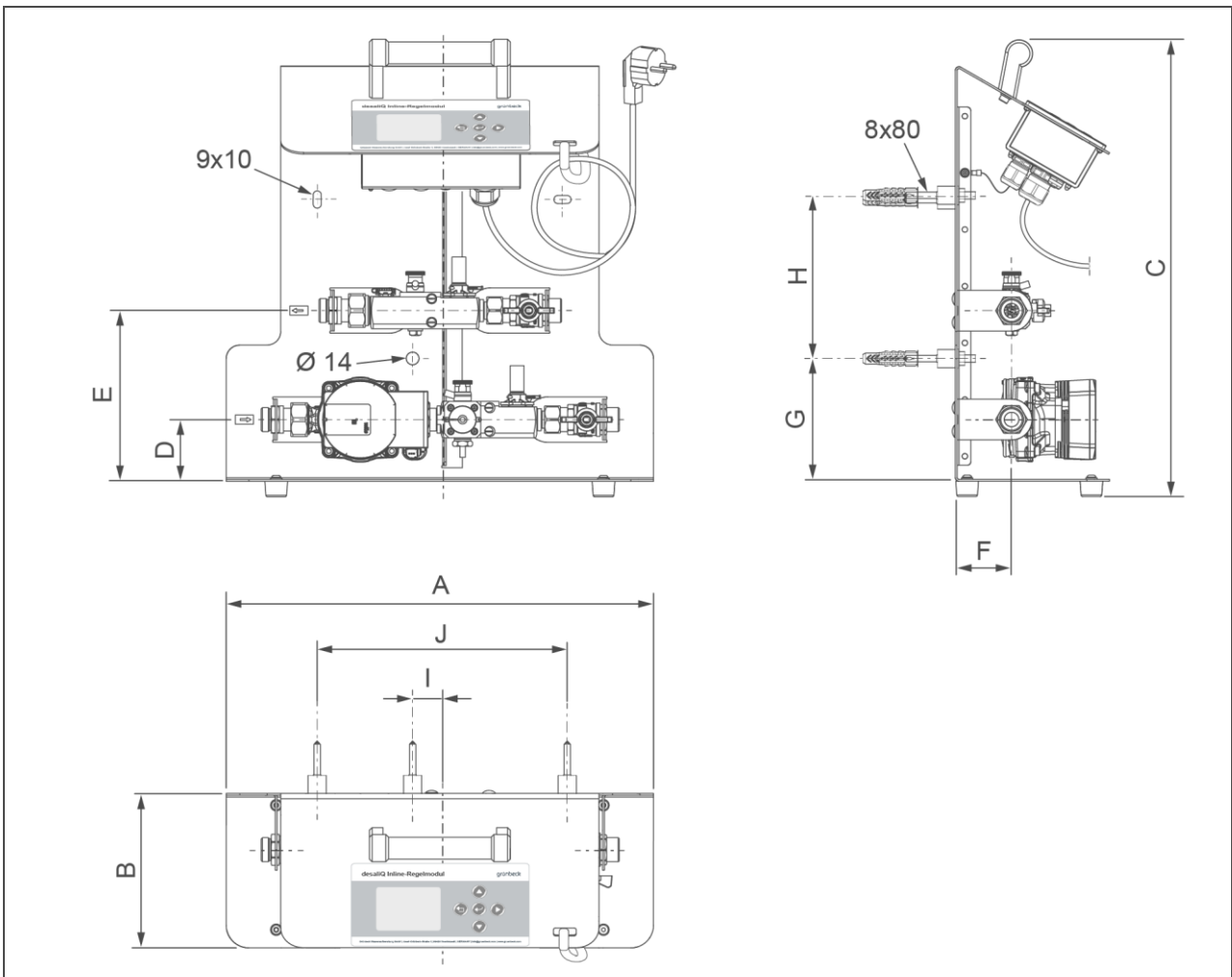
Scope of supply

- desaliQ inline control module, ready for connection
- Seal kit
- Fastening kit for wall mounting
- Operation manual

Versions for Switzerland, Denmark and Uruguay:

- System with country-specific mains plug

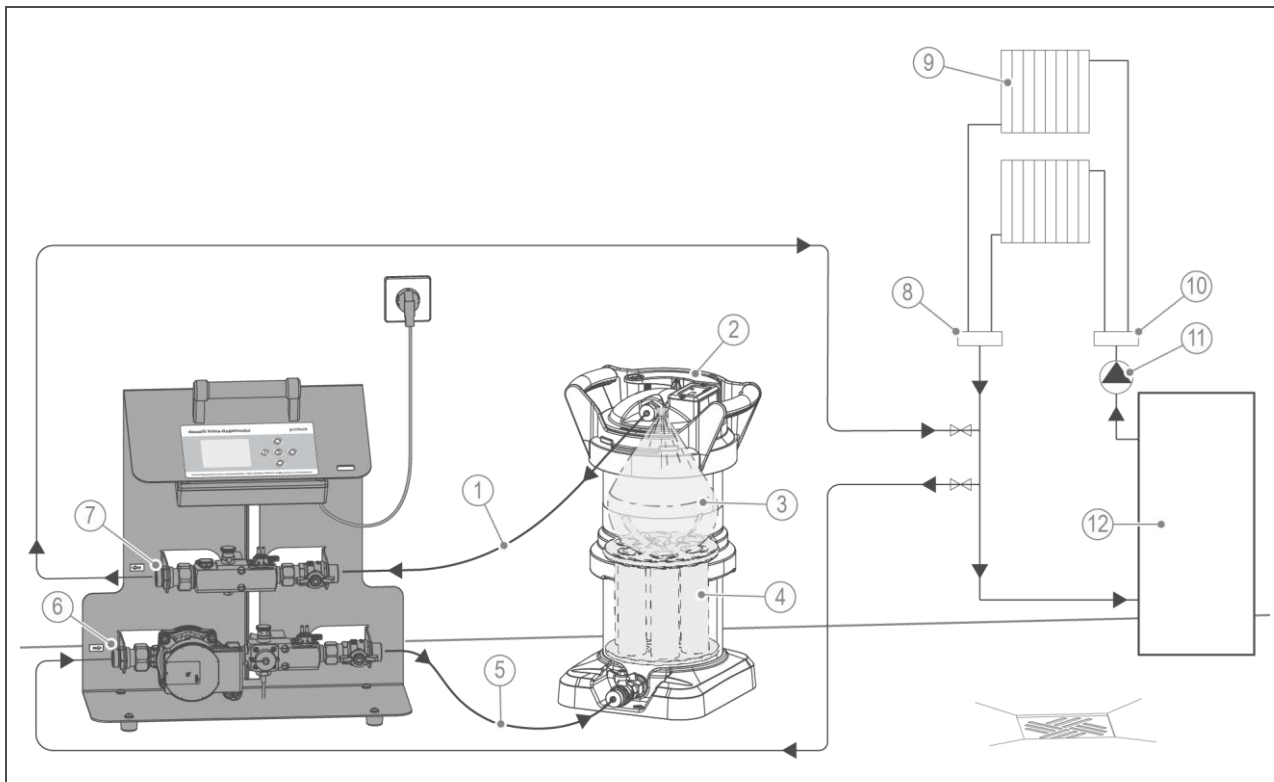
Technical specifications



Dimensions and weights		
A	Width	mm 470
B	Depth	mm 170
C	Height	mm 490
D	Connection height of pump section	mm 85
E	Connection height of sensor section	mm 205
F	Connection depth of pump and sensor section	mm 62
	Approx. weight	kg 9.3
Bores for wall mounting (optional)		
G	Height of hole Ø14	mm 135
H	Height of slotted holes 9x10	mm 175
I	Distance of hole Ø14	mm 30
J	Distance of slotted holes 9x10	mm 270

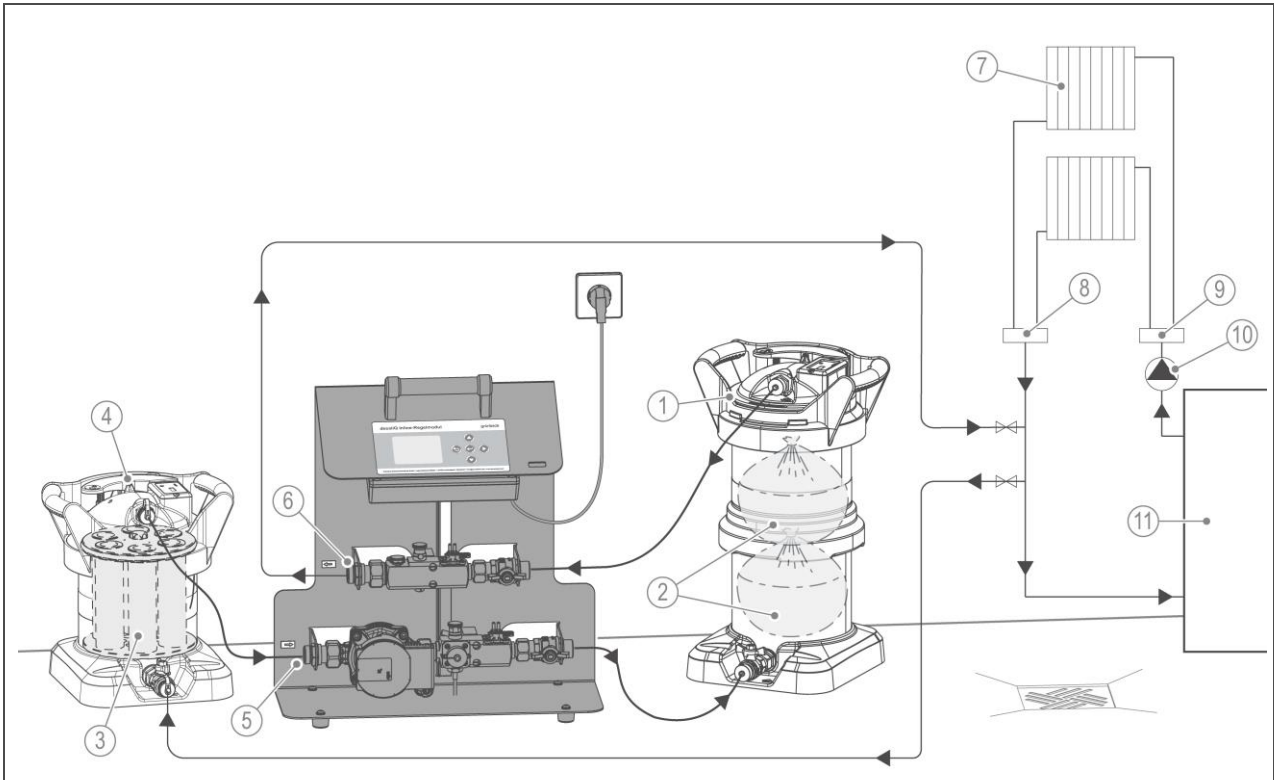
Connection data		
Nominal connection diameter of inlet and outlet		DN 20 (¾" m. thread)
Power supply	V/Hz	230/50 – 60
Rated power (operation)	W	70
Performance data		
Nominal pressure	PN	6
Operating pressure (circuit)	bar	1.5 – 4
Flow at Δp 1 bar (in combination with desaliQ:MB9)	l/h	720
Nominal flow (in combination with desaliQ:MB9)	m³/h	0.9
General data		
Water temperature	°C	5 – 80
Ambient temperature	°C	5 – 40
Order no.		707000030000
Order no. Version Switzerland (CH)		707000036700
Order no. Version Denmark (DK)		707000036800
Order no. Version Uruguay (UY)		707000038200

Installation example I



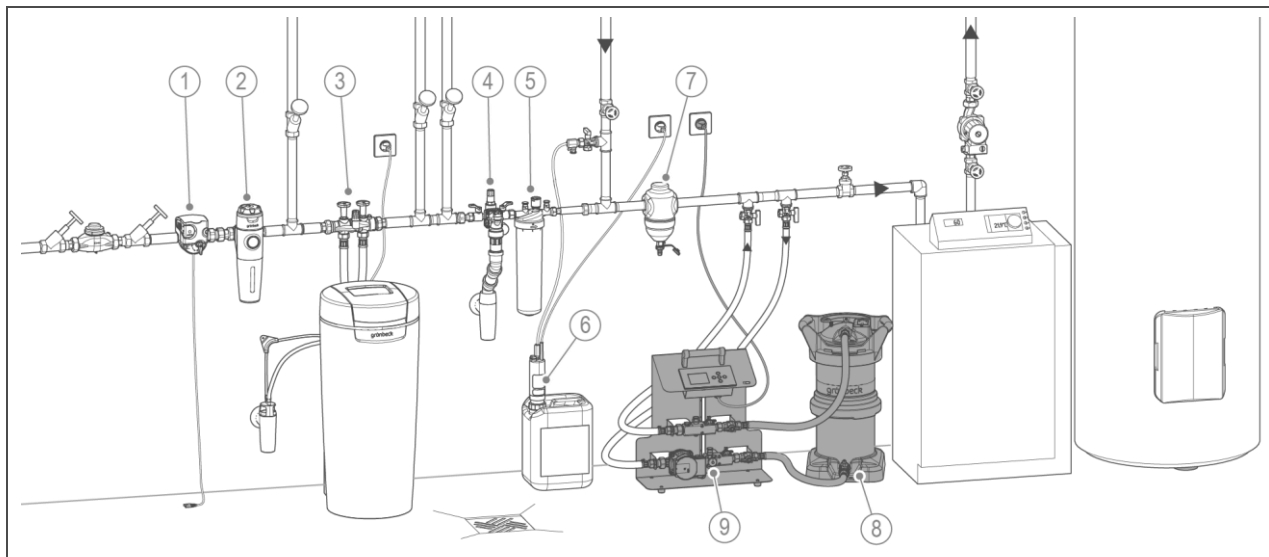
Item	Designation	Item	Designation
1	Outlet of desaliQ:MB9 (filtered heating water)	2	Mixed bed cartridge desaliQ:MB9
3	desaliQ resin bags	4	desaliQ inline filter module
5	Inlet to desaliQ:MB9 (heating water)	6	Connection from heating circuit (pump section)
7	Connection to heating circuit (sensor section)	8	Return of heating circuit
9	Consumer	10	Supply of heating circuit
11	Circulation pump	12	Boiler

Installation example II



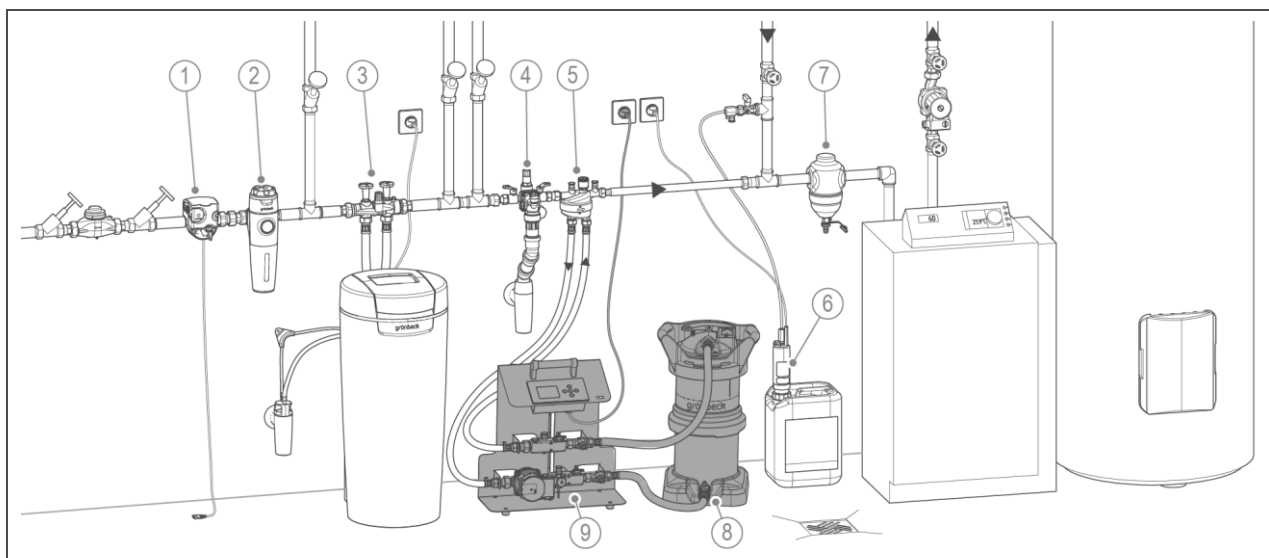
Pos.	Bezeichnung	Pos.	Bezeichnung
1	Mixed bed cartridge desaliQ:MB9	2	desaliQ resin bags (2x)
3	desaliQ Inline filter module	4	Mixed bed cartridge desaliQ:MB5
5	Connection from heating circuit (pump section) and upstream desaliQ:MB5	6	Connection to heating circuit (sensor section)
7	Consumer	8	Return of heating circuit
9	Supply of heating circuit	10	Circulation pump
11	Heating system		

Installation example I (treatment in partial flow filtration)



Item	Designation	Item	Designation
1	Safety device protectliQ	2	Drinking water filter pureliQ
3	Water softener softliQ	4	System separator BA (filling group thermaliQ:SB13)
5	Treatment group thermaliQ:HB2	6	thermaliQ filling pump for dosing solution for heating protection
7	GENO-therm sludge separator	8	Mixed bed cartridge desaliQ:MB9
9	desaliQ inline control module		

Installation example II (filling)



Item	Designation	Item	Designation
1	Safety device protectliQ	2	Drinking water filter pureliQ
3	Water softener softliQ	4	System separator BA (filling group thermaliQ:SB13)
5	Treatment group thermaliQ:HB2 with connection adapter	6	thermaliQ filling pump for dosing solution for heating protection
7	GENO-therm sludge separator	8	Mixed bed cartridge desaliQ:MB9
9	desaliQ inline control module		

Installation requirements

Obey the local installation directives, general guidelines and technical specifications.

- The installation site must be frost-proof and protect the product from direct sunlight, chemicals, dyes, solvents and their vapours.
- The installation room must have a floor drain. If no floor drain is available, an appropriate safety device must be installed.
- The installation site must be adequately illuminated and ventilated.
- In case of optional wall mounting, the wall must be load-bearing according to the weight of the system.
- For installation and operation of the system, a clearance of approx. 800 mm must be available in front and on the sides of the system.
- For make-up water feed and filling, a drinking water filter and a system separator must be installed upstream of the system.
- A Schuko socket is required for electrical installation.
- For versions for Switzerland, Denmark and Uruguay, a country-specific socket is required.
 - Do not interconnect the socket with a light switch, heating emergency switch or the like.

Accessories

desaliQ inline filter module
Order no. 707000010000

Mixed bed cartridge desaliQ:MB5
Order no. 707000060000

Mixed bed cartridge desaliQ:MB9
Order no. 707 455

Softening cartridge
decaliQ:BA12 VARIO mini
Order no. 707 765

Softening cartridge
decaliQ:BA16 VARIO mini
Order no. 707 785


Hose kit DN 20, straight/straight
Order no. 707 840

Hose kit DN 20, straight/90°
Order no. 707 845

Contact

Grünbeck Wasseraufbereitung GmbH
Josef-Grünbeck-Str. 1
89420 Hoehstaedt
GERMANY

 +49 9074 41-0

 +49 9074 41-100

info@gruenbeck.com
www.gruenbeck.com

